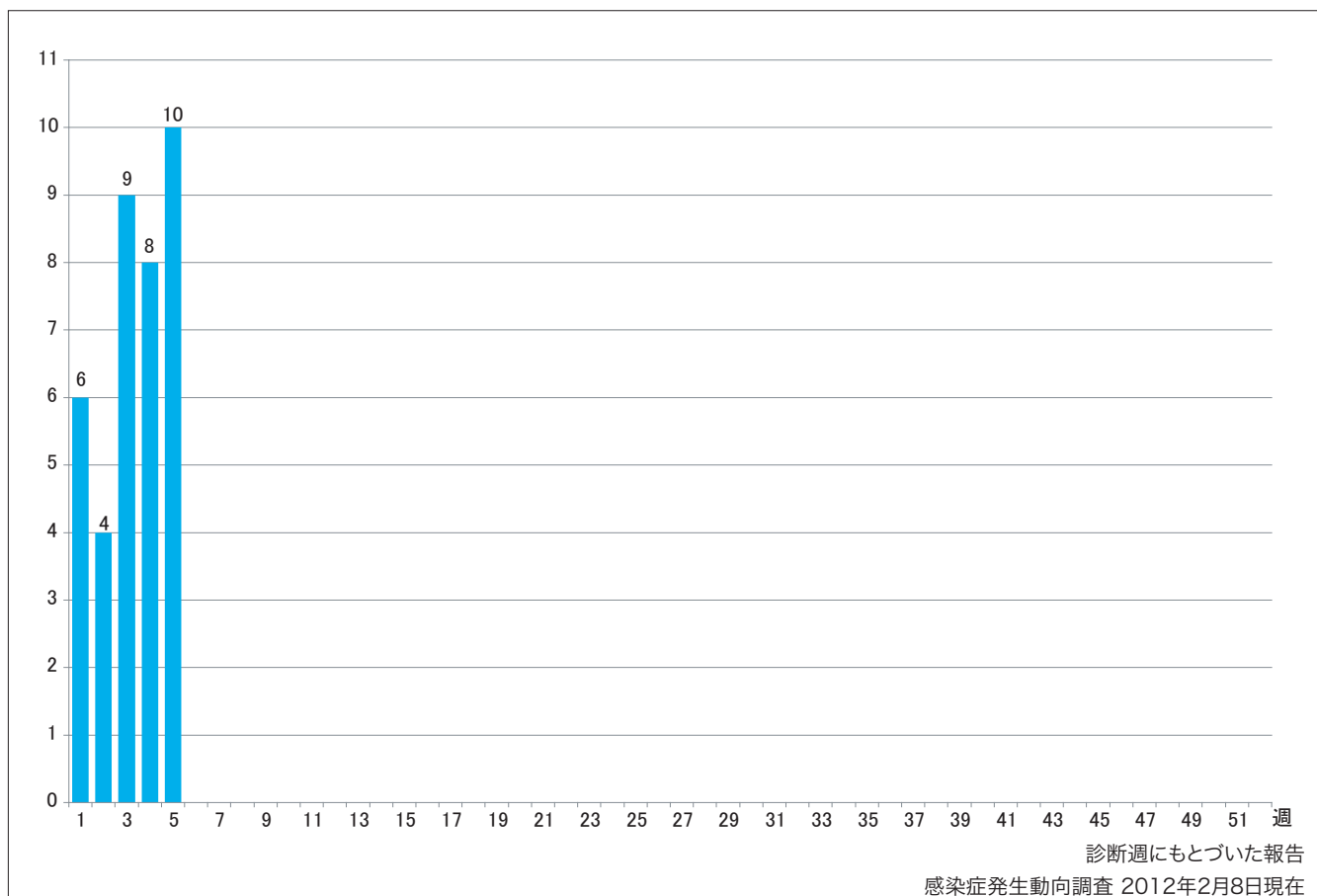


1. 週別麻疹報告数 2012年 第1~5週 (n=37)

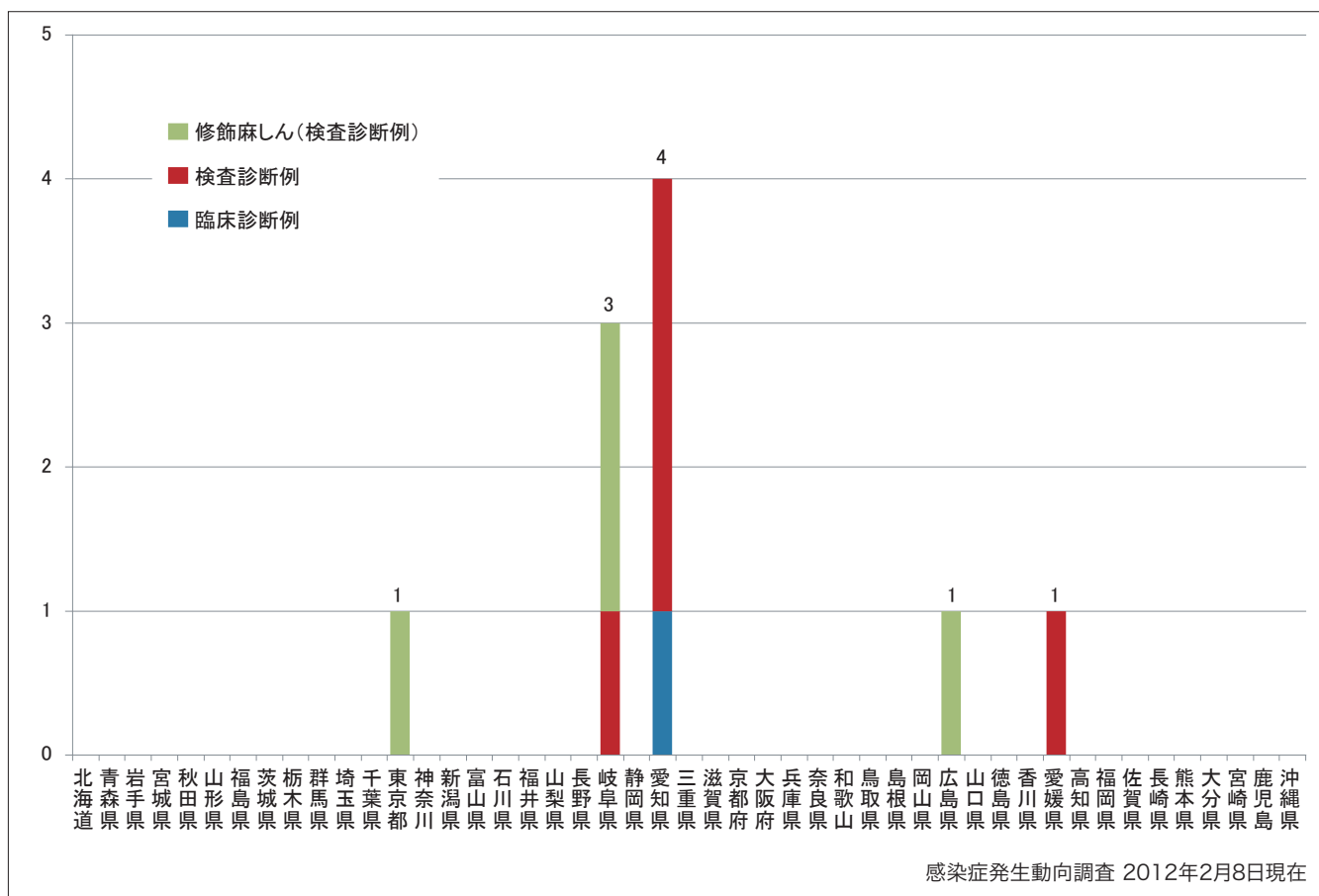
Weekly measles cases from week 1 to week 5, 2012 (based on diagnosed week as of February 8, 2012).



2. 都道府県別病型別麻疹報告数2012年 第5週 (n=10)

Reported measles cases by prefecture and methods of diagnosis in week 5, 2012 (as of February 8, 2012).

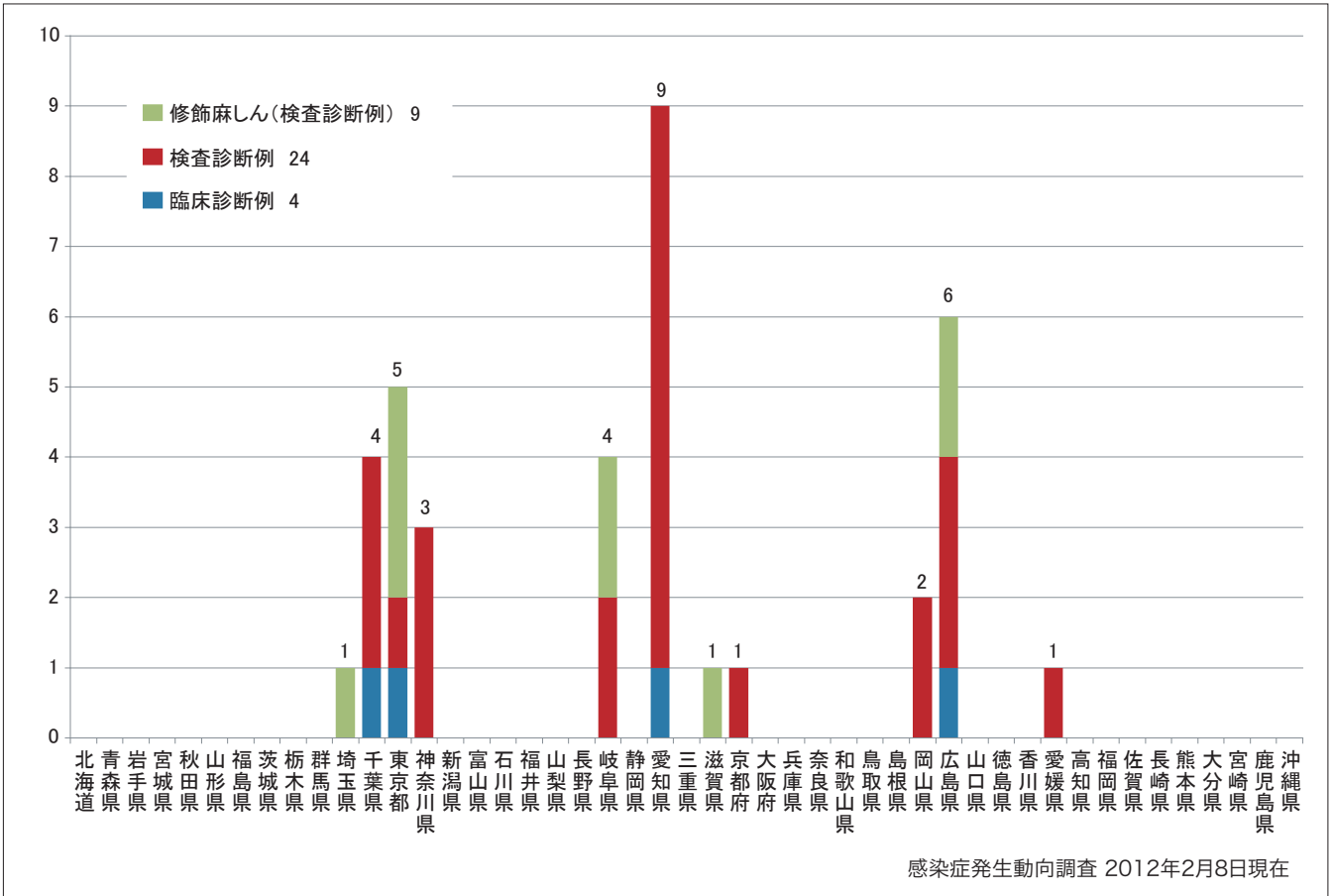
■ Clinically diagnosed ■ Laboratory diagnosed ■ Modified measles, laboratory diagnosed



3. 都道府県別病型別麻疹累積報告数 2012年 第1~5週 (n=37)

Cumulative measles cases by prefecture and methods of diagnosis from week 1 to week 5, 2012 (as of February 8, 2012).

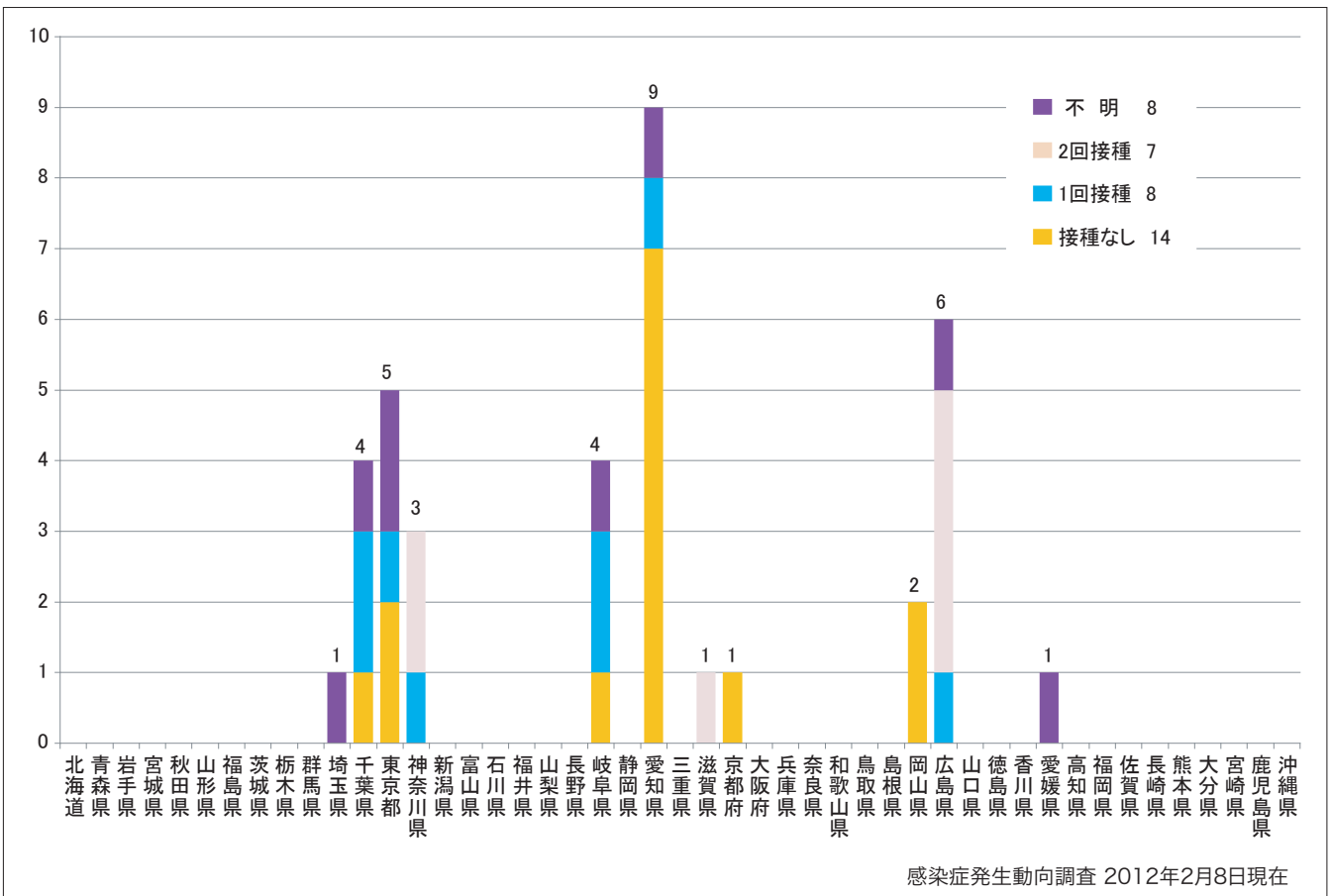
■ Clinically diagnosed ■ Laboratory diagnosed ■ Modified measles, laboratory diagnosed



4. 都道府県別接種歴別麻疹累積報告数 2012年 第1~5週 (n=37)

Cumulative measles cases by prefecture and vaccinated status from week 1 to week 5, 2012 (as of February 8, 2012).

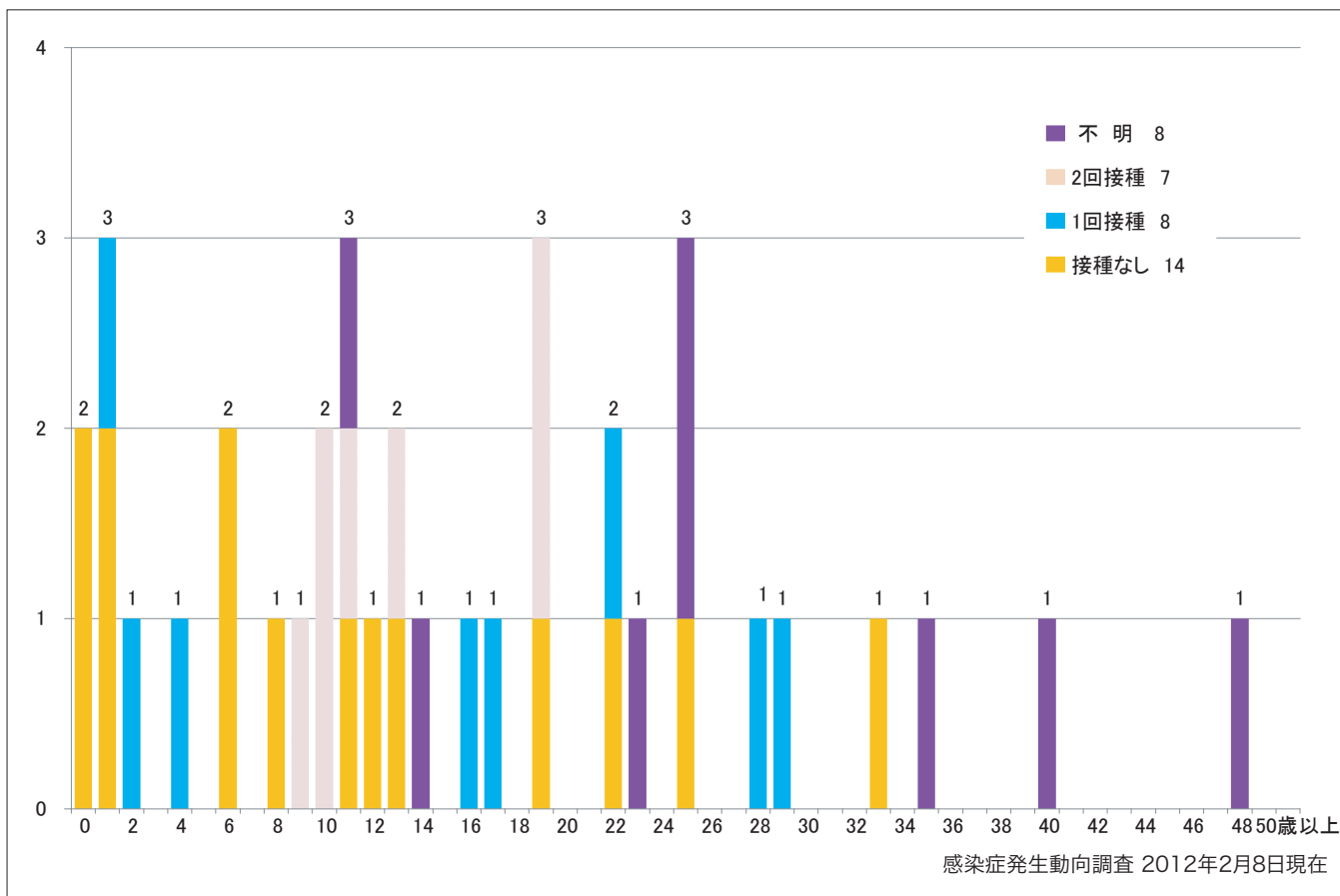
■ None ■ MCV1 ■ MCV2 ■ Unknown



5. 年齢群別接種歴別麻疹累積報告数 2012年 第1～5週 (n=37)

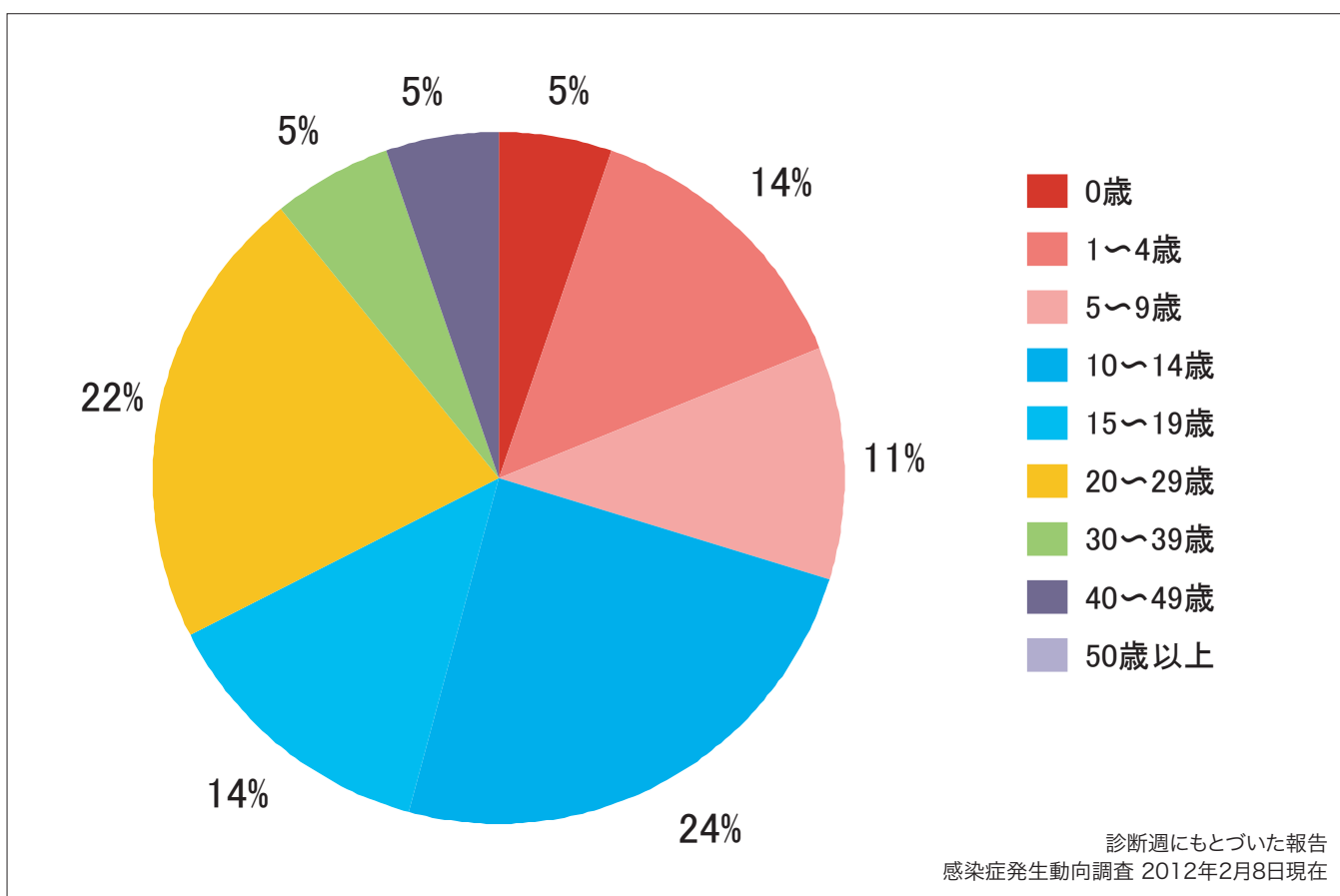
Cumulative measles cases by age and vaccinated status from week 1 to week 5, 2012 (as of February 8, 2012).

None MCV1 MCV2 Unknown



6. 年齢群別麻疹累積報告数割合 2012年 第1～5週 (n=37)

Percentage of cumulative measles cases by age group from week 1 to week 5, 2012 (as of February 8, 2012).

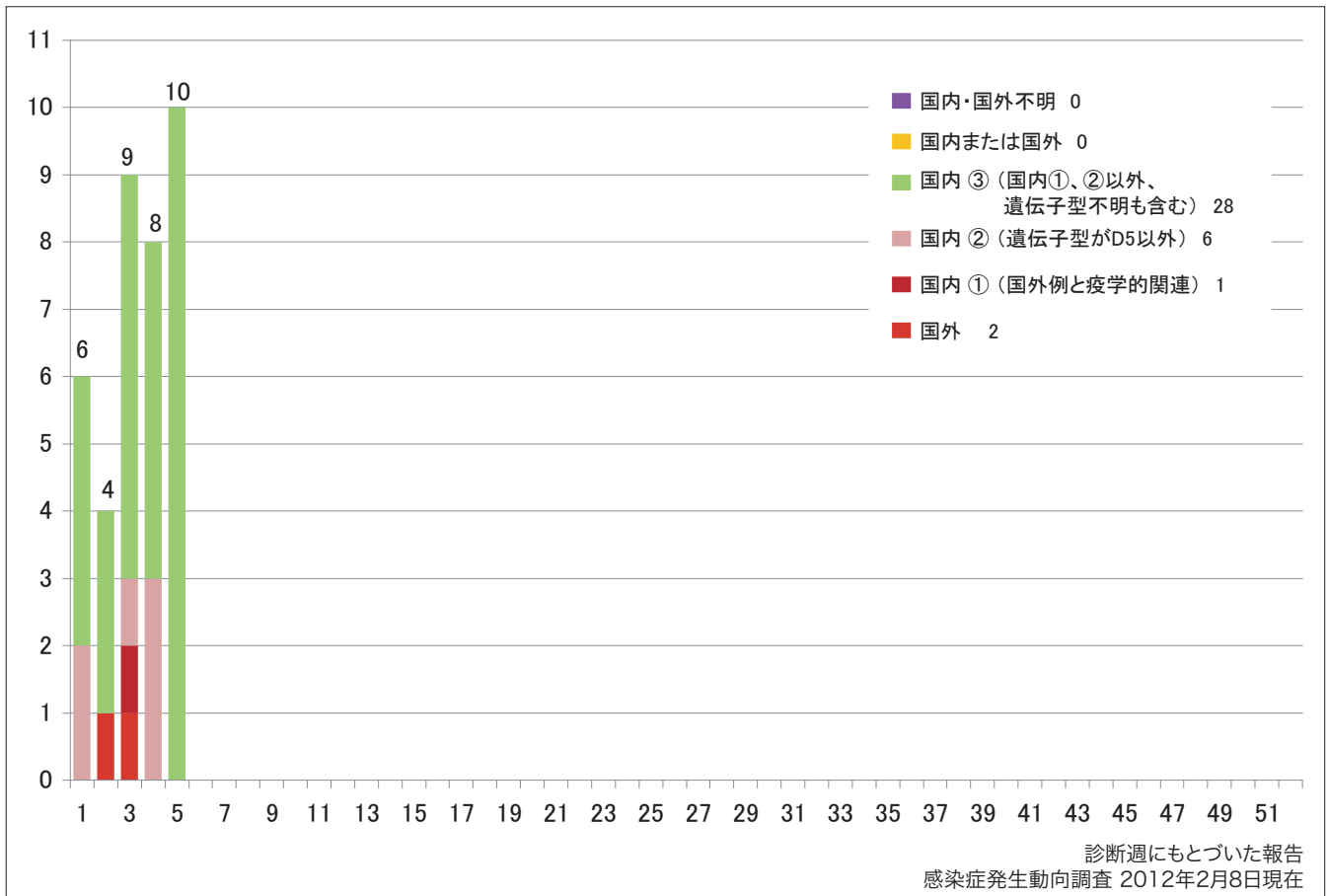


7. 週別推定感染地域（国内・外）別麻疹報告数 2012年 第1～5週（n=37）

Weekly measles cases by acquired region from week 1 to week 5, 2012

(based on diagnosed week as of February 8, 2012).

■ Imported cases ■ Domestic cases① (import-linked cases) ■ Domestic cases② (Except for genotype D5) ■ Domestic cases③ (other than①and②) ■ Unspecified ■ Unknown

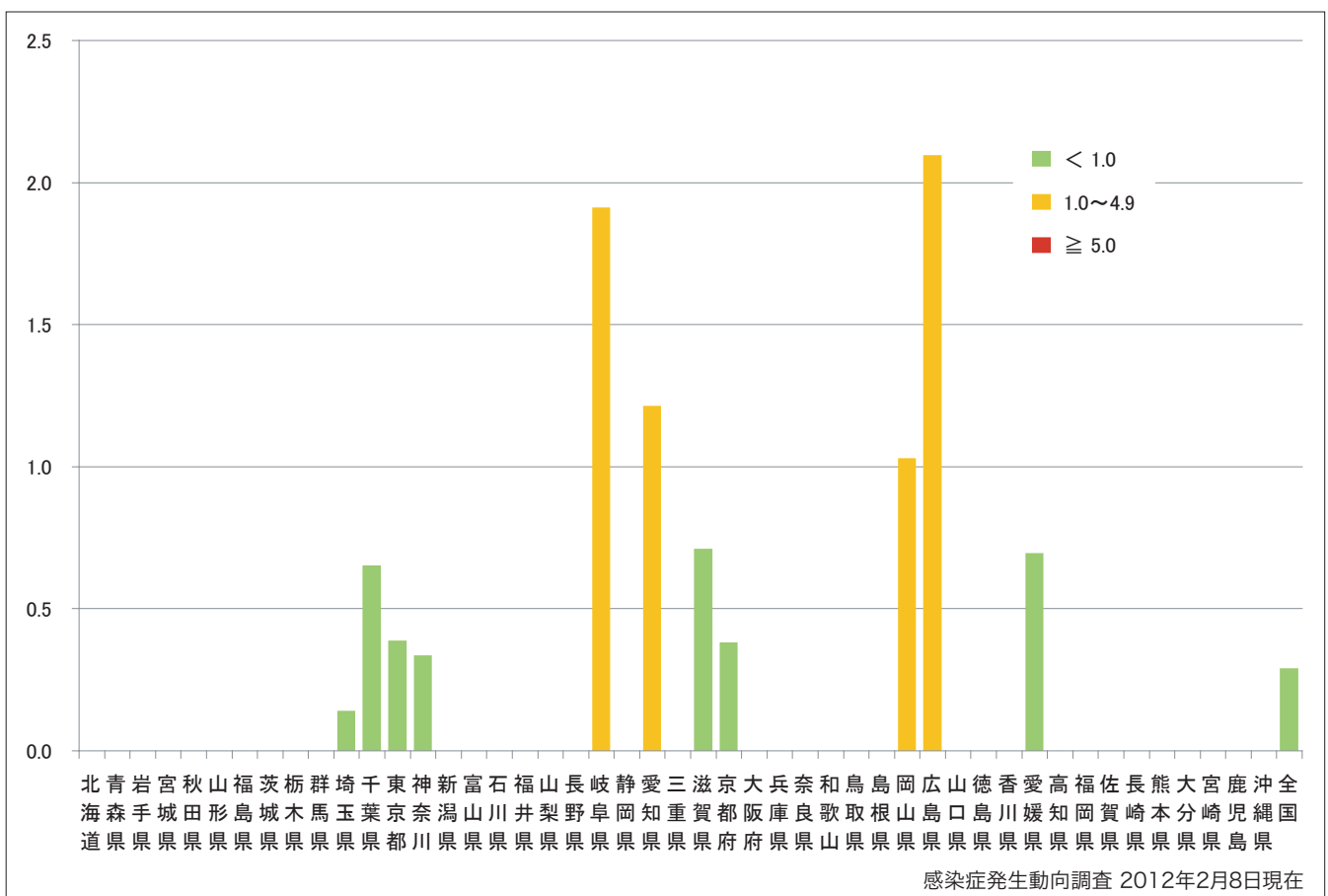


8. 都道府県別人口百万人あたり麻疹報告数 2012年 第1～5週（n=37）

Number of reported cases per 1 million population by prefectures from week 1 to week 5, 2012

(as of February 8, 2012).

■ <1.0 ■ 1.0～4.9 ■ ≥5.0



9. 都道府県別麻疹週別報告状況 2012年 第1~05週 感染症発生動向調査

2012年02月08日現在

Weekly measles cases from week 1 to week 05, 2012 (based on diagnosed week as of February 08, 2012)

